



**SEALFAST**  
THE SIMPLE SOLUTION

# PIPE FITTINGS & VALVES



## COMBINATION NIPPLES

HEX SHANK- STEEL & ZINC PLATED STEEL

### FEATURES & APPLICATIONS:

#### • General Uses:

Working pressures may vary with type and clamping system used to install couplings.

Combination Nipples are recommended for low pressure discharge and suction service for compatible liquids. NOT for compressible products such as Air, Nitrogen and Steam.

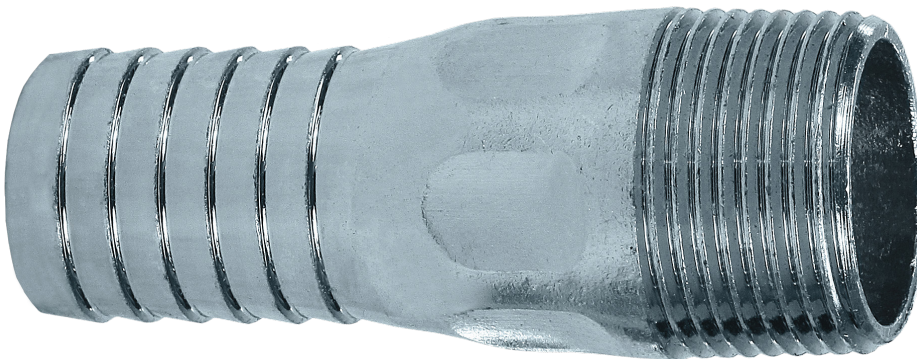
\*All blank end & grooved combination nipples are made using Schedule 40 pipe.

Seal Fast Crimp Combination Nipples are to be used with Seal Fast Ferrules and Crimp Sleeves. They are designed with an Interlock System which allows the Ferrule to be permanently attached to the coupling.

**WORKING PRESSURE 200 PSI**



STEEL



ZINC PLATED STEEL

### STEEL & ZINC PLATED STEEL

SIZE	STEEL	Zinc Plated Steel
1/2"	SF050HXS	SF050HXSP
3/4"	SF075HXS	SF075HXSP
1"	SF100HXS	SF100HXSP
1-1/4"	SF125HXS	SF125HXSP

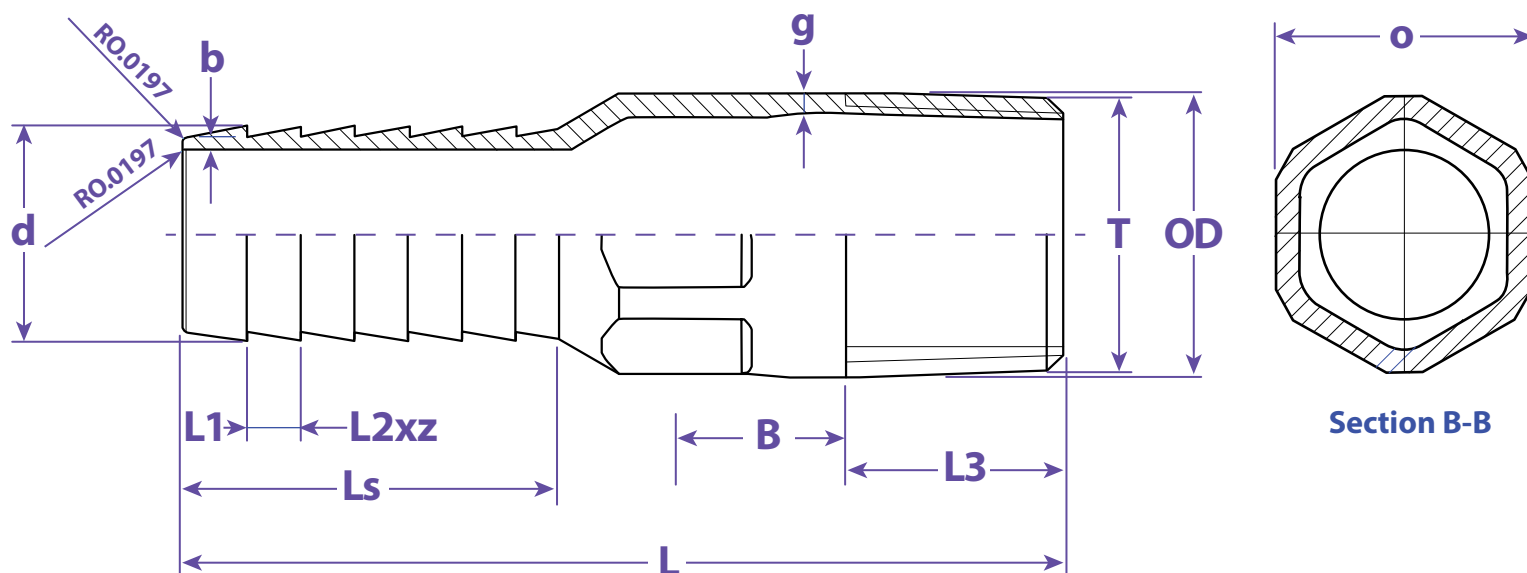


Information contained on this page is for general information purposes only. Seal Fast Inc. assumes no responsibility for errors or omissions for this product.



**SEALFAST**  
THE SIMPLE SOLUTION

# PIPE FITTINGS & VALVES



## Dimensions

OD	L	L1	L2	L3	Ls	D	O	d	b	g	Z	T Pitch of Screw	Part #
1/2"	3.228	0.236	0.197	0.783	1.417	0.8543307	0.689	0.5354	0.031	0.0906	6	0.07126	SF050HXS - HSXP
3/4"	3.228	0.236	0.197	0.795	1.417	1.0708661	0.945	0.7795	0.031	0.0906	6	0.07126	SF075HXS - HSXP
1"	3.228	0.236	0.197	0.807	1.417	1.3385827	1.181	1.0354	0.031	0.12598	6	0.087008	SF100HXS - HSXP
1-1/4"	3.929	0.276	0.236	1.008	1.693	1.6811024	1.496	1.2992	0.031	0.12598	6	0.087008	SF125HXS - HSXP

## TITLE COMBINATION NIPPLES - HEX SHANK

### DISCLAIMER

All drawings and specifications are subject to change without notice. Drawings represent general dimensions of our products. Seal Fast cannot guarantee the dimensions of the part will exactly match those in the drawing. This drawing is the property of Seal Fast Inc. Copying or reproduction of this drawing is expressly prohibited.

### MATERIAL

SFxxxHXS Steel  
SFxxxHSXP Zinc Plated Steel

**DRAWING NOT TO SCALE**

**PART # SF...HXS, HXSP**

